

# 1



## Executive Summary

48-BED STATE-OWNED COMMUNITY CIVIL FACILITY

### Summarize the Problem

Governor Inslee laid out his vision to provide mental health services in local communities for people with acute mental illness in the 2019 Legislative Session. Serving people in their home communities is essential to this plan. The transformation requires development of a continuum of services that can prevent or divert people from being committed to the state hospitals and can support people in their recovery after treatment in a hospital is complete.

Governor Inslee and the Legislature are spurred by Washington's rank of 47th in the nation in capacity for appropriate mental health services. Compared to the rest of the country, Washington has a high prevalence of mental illness and low access to care. Within two years, the state will need almost 370 more civil beds than our current capacity.

The state is at the beginning of a major reform of the entire behavioral health service delivery model. The large state hospitals will evolve into a Center of Forensic Excellence through phased renovation and the construction of new hospitals designed with a new model for mental health care.

Other state agencies and the University of Washington have also been funded and charged with the responsibility to increase the number of psychiatric services such as housing.

### DSHS' Commitment to Community-Based Treatment

The Legislature supported Governor Inslee's concept and, in the 2019 Session, enacted a budget and provided direction to the Department of Social and Health Services to begin development of three small community-based/behavioral health residential treatment facilities.

These facilities would provide a range of services to people as they move through the treatment regimen: evaluation and treatment, 90-day to 180-day intensive treatment, and a step-down program to ready people for their return to home and work. The department submitted to the Legislature a preliminary pre-design for one of the 48-bed facilities by December 31, 2019.

### **Current State of Civil Commitment At Western State Hospital**

Western State Hospital (WSH) was budgeted for 527 civil commitment beds through July 2019. In August 2019, 60 civil commitment beds were taken off line for conversion to forensic capacity. Now only 487 beds remain available for civil commitments.

### **Projected Need for Civil Commitment Beds in Washington**

Based on the report submitted to the Legislature in December 2018, the projected need for civil capacity beds that provide services for people who have 90-180 day commitments is 934 in 2021 and increases to 980 in 2025. Refer to Appendix G, "Report to the Legislature: Predicting Referrals for Competency, 12/1/18" for a copy of the full report.

### **Future State of Civil Commitment At Western State Hospital**

The expectation of the governor and the legislature is a gradual decrease in the number of civil commitments at WSH as additional resources are introduced through community-based facilities.

Decentralization of civil commitments supports goals set by the governor and the legislature to create additional forensic psychiatric capacity on the grounds of WSH. This includes the design and building of a new forensic hospital and the establishment of a program that supports a forensic center of excellence.

### **Future State of Community-Based Civil Commitments in Washington**

This project constructs a state-operated 16-bed program for civil commitment, a privately-operated 16-bed program for civil commitment, and a privately-operated step-down transition program for those needing additional support prior to returning to the community.

Other investments made by the legislature to create civil commitment capacity include operating funds that were provided to the Health Care Authority and a directive to contract for civil commitment beds. These legislative investments are projected to result in 275 beds for long term (90 and 180 days) commitments by 2023.

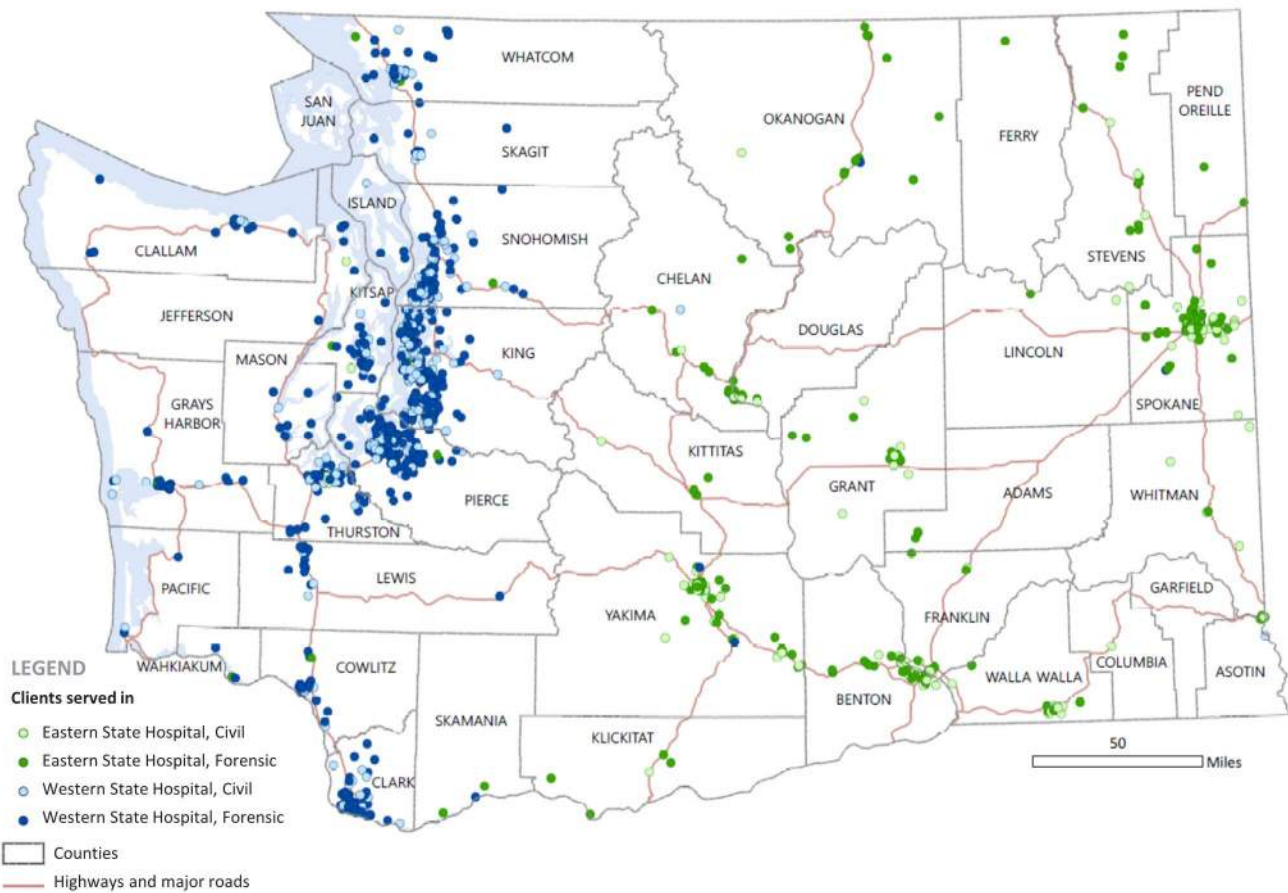
Location of new facilities will be made in part based

on regional need. While all western Washington regions need capacity, the recent closure of the only residential treatment facility in Clark County has resulted in no access to civil care in the Southwest Region. This is the only Western Washington Region without any civil capacity.

# State County Map 1-1

This map shows the home community from which civil and forensics patients are coming from and at which state facility they are receiving mental health services.

## Persons Served at State Hospitals, CY 2018

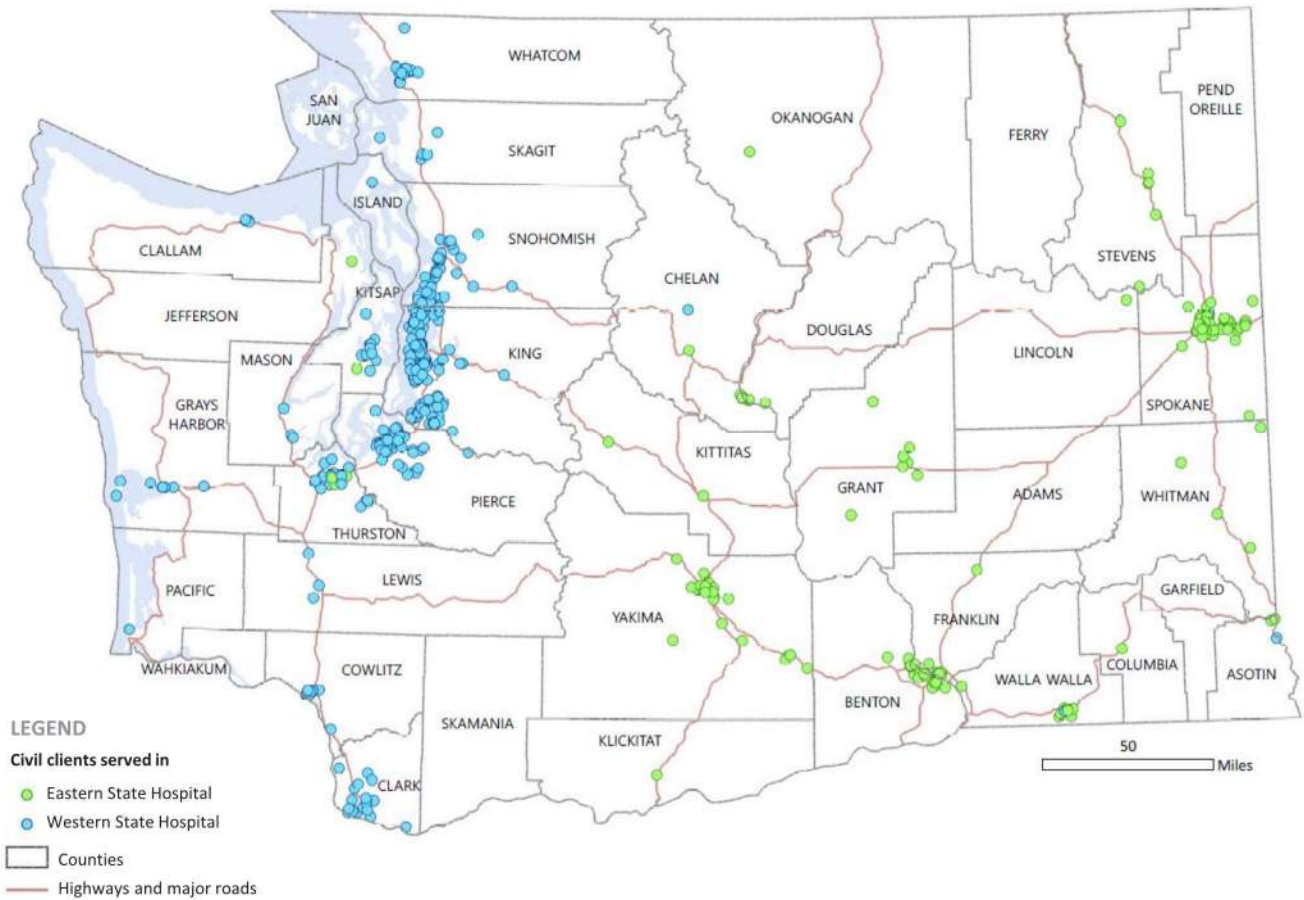


DSHS | Facilities, Finance, and Analytics Administration | Research and Data Analysis Division • JANUARY 10, 2020

## State County Map 1-2

This map shows the home community from which civil patients are coming from and at which state facility they are receiving mental health services. Note the high concentration in Snohomish, King, Pierce, Thurston and Clark Counties.

### Persons Served at State Hospitals, CY 2018, Civil

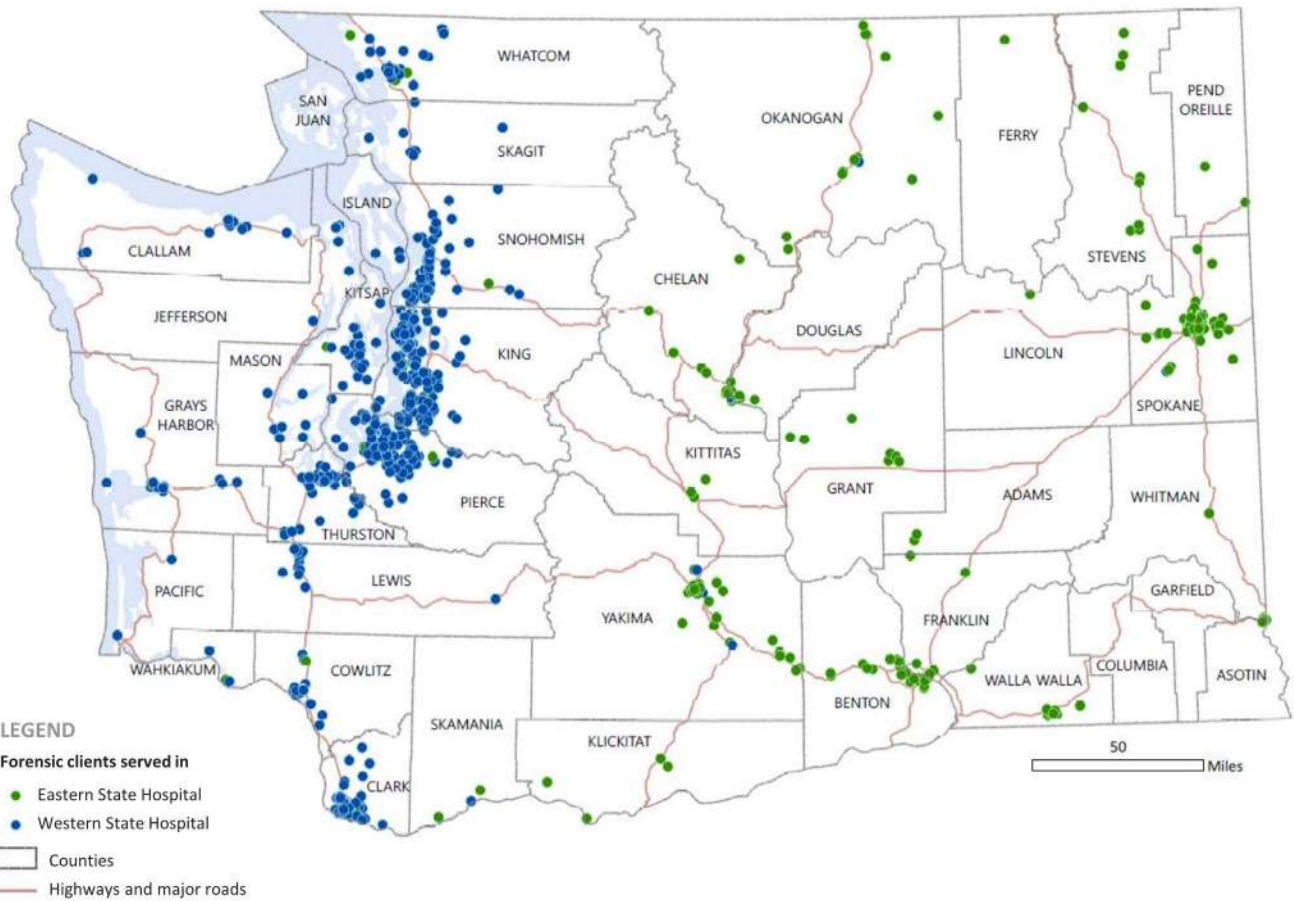


DSHS | Facilities, Finance, and Analytics Administration | Research and Data Analysis Division • JANUARY 10, 2020

## State County Map 1-3

This map shows the home community from which forensics patients are coming from and at which state facility they are receiving mental health services. These patients will continue to receive treatment at the state hospitals.

### Persons Served at State Hospitals, CY 2018, Forensic



DSHS | Facilities, Finance, and Analytics Administration | Research and Data Analysis Division • JANUARY 10, 2020

## Alternatives Considered

This predesign report studies six potential Western Washington locations as options for the 48-bed capacity community facility. The sites are distributed throughout the I-5 Corridor to address local communities' needs and partnerships with other local behavioral health facilities.

Four potential sites are on or near existing State-owned campuses: Fircrest School in Shoreline, Echo Glen in Snoqualmie, Western State Hospital in Lakewood, and Maple Lane in Centralia. The remaining two sites are in communities where property has been identified as available and would require to be purchased. The intent is to identify sites where the use is permitted outright or as necessary conditional use as a less desirable alternative.

### **Alternative 1 - No Action-No New 48-bed Facility**

#### **Alternative 2 - Fircrest School**

Two locations studied for location on Fircrest School Campus for a new 48-bed facility.

#### **Alternative 3- Western State Hospital**

Location south of existing Buildings 28 and 29 on Cottage Row for a new 48-bed facility.

#### **Alternative 4 - Echo Glen**

Location southwest of existing Echo Glen Children's Center for a new 48-bed facility.

#### **Alternative 5 - Maple Lane**

Location southwest of existing Administration Building for a new 48-bed facility.

#### **Alternative 6 - Clark County**

Locations evaluated include four in the City of Vancouver for a new 48-bed facility.

#### **Alternative 7 - Snohomish County**

Five locations reviewed for a new 48-bed facility.

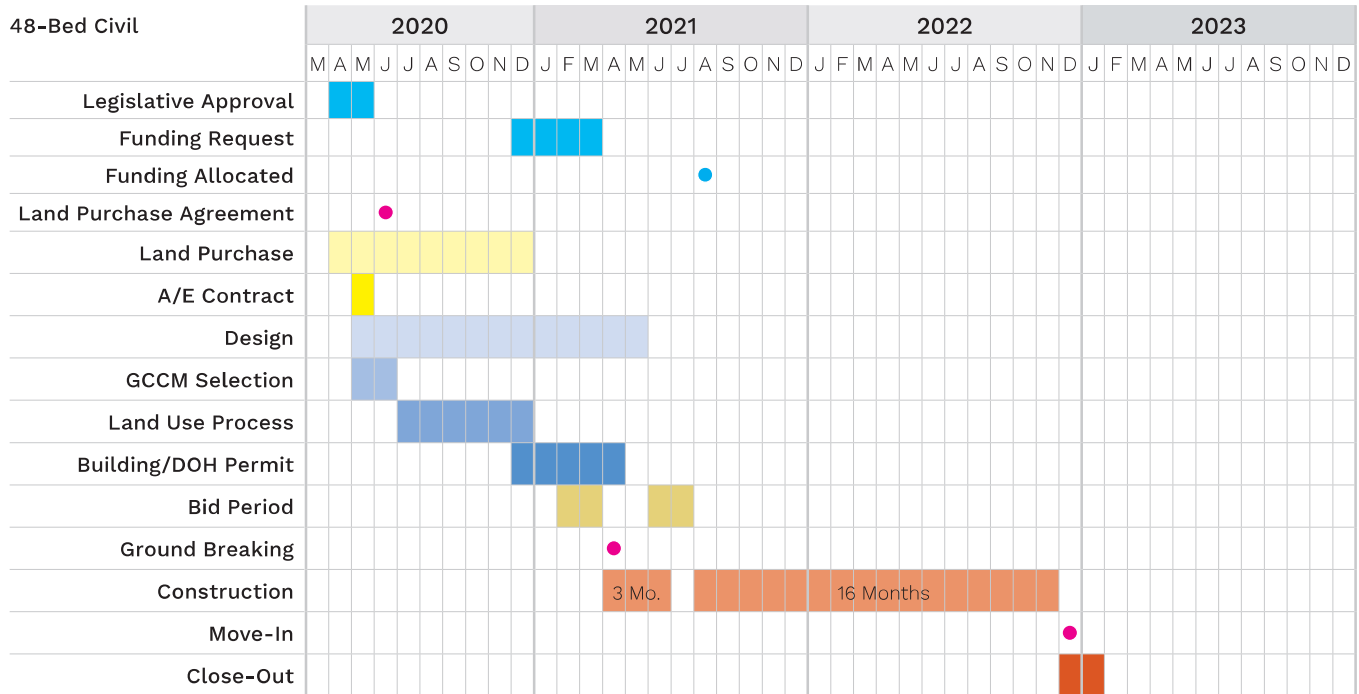
## Preferred Alternate

### **Alternative 6 - Clark County**

The Clark County site alternative is centrally located in Vancouver, WA was selected for the following reasons:

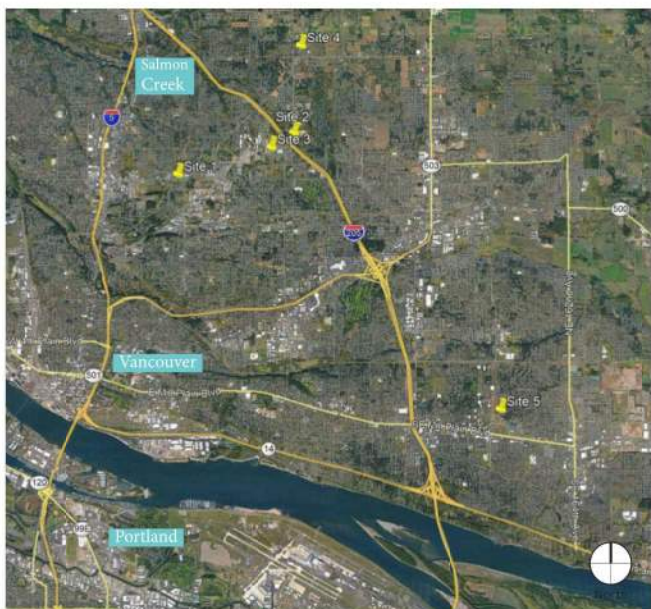
- Southwest Washington is currently under served by existing behavioral health assets. There is limited in-patient mental health resources in the greater Clark County area.
- Land use approvals can be obtained in a reasonable time frame.
- County officials appear to be accepting of the new service to be added to their community.
- Identified sites are close to public transportation allowing convenient access and family members to participate in the treatment/transitional process.
- Ability to draw staff from the metropolitan Portland area.
- The preferred site is flat and has access to utilities. As opposed to state-owned sites, the utility connections shouldn't require major infrastructure upgrades.
- Access to parking is nearby.
- Ability to create a behavioral health center with community partners.

# Project Schedule



## Cost Summary

The estimated total project cost for Preferred Alternative #6 Clark County: 48-bed, LEED Silver plus Net-Zero, in 2021 dollars, is approximately \$51 million depending on site and property purchase.



Aerial Photo Map Data: Copyright 2019 Google

## Conclusion

The legislature has increased investment to support people who have been in the state hospitals and are in need of significant support to remain stable and transition back to their community. Investments have included facilities and programs operated by the Aging and Long Term Supports Administration, the Developmental Disabilities Administration, and the Health Care Authority. There are several goals for these investments:

- Provide quick access to mental health treatment to improve recovery outcomes.
- Decrease the number of people who become unstable in the community and need inpatient care.
- Provide discharge options for people in the hospital who have specialized needs to return to their community.

The Clark County site offers the best option to make an immediate impact to the shortage of 90/180 day beds. With its nearby community partners, this site offers an exciting pathway for patients to recover and return to the community.