

LIGHTHOUSE

FINANCIAL FOUNDATION



Helping people navigate their way toward a secure financial future.

LighthouseFinancialFoundation.org

Connecting Families & Businesses In Need With Those That Can Help



What we do.

We provide resources that empower all people to transform their financial lives.

Lighthouse Financial Foundation was created to help individuals and families in Southwest Washington and the Portland Metro Area that seek financial wellness. In partnership with our honored donors and network of service partners, we provide access to financial education, affordable products and services to those seeking financial wellness.

By creating a solid base through financial education and affordable financial services, these individuals are able to work through crises when they occur. We will help financially stabilize families in need and give them the tools they need to create a budget for today and a plan for tomorrow.

We engage our clients within 4 dimensions of financial wellness:



"I had to look into the future and took little steps along the way to get to the next goal and it was difficult since I had made many mistakes in my life. Despite the hardships in earning my college degree it was worth it, the difficulty in improving my credit score it was worth it, and getting a job it was worth it. Having people believe in me and believing in myself was also key."

~ Client

Who we are.

We are a qualified non-profit with a mission to assist all people with financial wellness and education in the quest for financial security.

Lighthouse Financial Foundation assists our neighbors in avoiding the pitfalls and habits of poverty, find financial wellness and empowerment, and enjoy the dignity and self respect that follows. Another welcome byproduct is the decreased reliance on our social services safety net.



Many of our neighbors are financially insecure. They're one hospital stay, auto repair bill,

or temporary job loss away from economic hardship. This instability leads some to pursue high-interest loans or other high cost services that only compound the problem. Lighthouse Financial Foundation offers a better way to start planning for tomorrow.

In tandem with our partners, we provide our services to the community through donations, grants, and other charitable support from individuals, partner foundations, and businesses throughout Southwest Washington.

Join our network of supporters.

Creating a stronger community for us all.

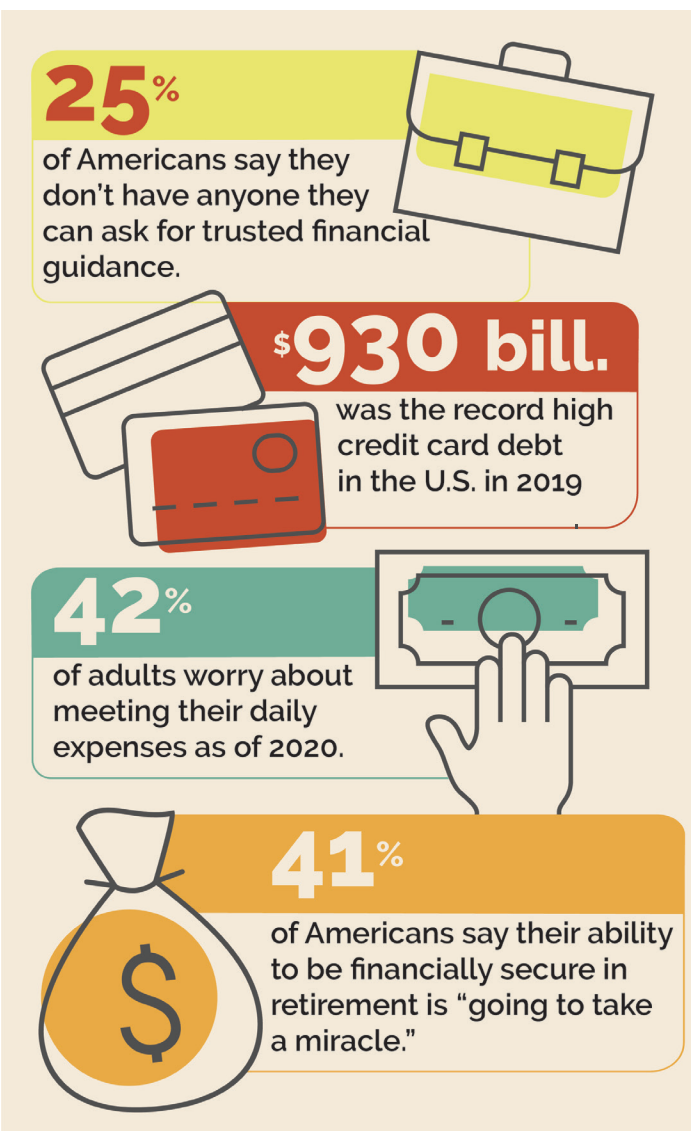
If you or your company want to make a difference and are looking to give back to the community, the Lighthouse Financial Foundation gives you the opportunity to do just that. Many of our clients don't realize they have the ability to regain financial stability—you will empower

them to take control of their money and future.

We realize that communication barriers can impact an individual's ability to excel. We work hard to overcome those barriers. Our website, seminars, classes and many publications are available in multiple languages to help ease that challenge.

Your company will join individuals, families, and other employers by supporting those that are seeking tools for financial sustainability, and people in financial distress. You will be helping those in the community as well as satisfying the charitable mission of your organization.

Together we can transform our community.



LIGHTHOUSE

FINANCIAL FOUNDATION

5

Max Impact:

Empower Your Community to Achieve Financial Success

"FINANCIAL WELL-BEING FOR ALL"

4

Life Goals:

On track to meet your financial goals

- Retirement Savings
- Financial Planning
- College Savings
- Major Expenses (Home, Car)
- Protection / Insurance

3

Freedom:

Financial freedom to make choices to enjoy life

- Budget Counseling
- Debt Counseling
- Debt Management Plans
- Access to Affordable Credit
- Credit Building

2

Security:

Capacity to absorb a financial shock

- Emergency Fund

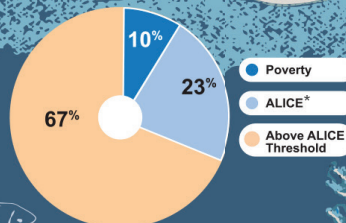
6 TO 12 MONTHS OF SAVINGS

1

Survival:

Control over your day-to-day, month-to-month finances

Washington	
Total Households	2,881,943
Poverty	10%
ALICE*	23%
Above ALICE Threshold	67%



We have plans.

We'd like you to join us.

Our Vision

A community where all people can achieve financial independence.

Our Mission

We provide resources that empower all people seeking assistance to transform their financial lives.

Our Values

- Inclusion
- Stewardship
- Integrity
- Collaboration
- Celebration

If our community members are doing better financially, then our communities do better financially, and if our communities are doing better financially, it's a win for all of us.

DONATE



Questions? Ready to help? Get in touch!



Kim Capeloto

360.768.6578

kim.capeloto@LHFinancialFoundation.org

LighthouseFinancialFoundation.org

*ALICE = Asset Limited, Income Constrained, Employed